



1

Manet, Eduoard 1832-Paris-1883

etching

framed, image size 96 x 82 mm.:

Charles Baudelaire de face, with text ; Peint et Gravé par Manet, 1865 Lower left Imp.Salmon Lower right (4th state) Published in Charles Baudelaire, sa vie et son oeuvre by Charles Asselineau. Edited by Lemerre 1896.

300-400

Fine impression.

See: M.Guérin L' Oeuvre Gravé de Manet. New York/Amsterdam, Da Capo Press & B.M.Israël. 1969. No. 38.



2

Francisco José de Goya y Lucientes. 1746-1828

original etching and dry point ca 1810-1820 :

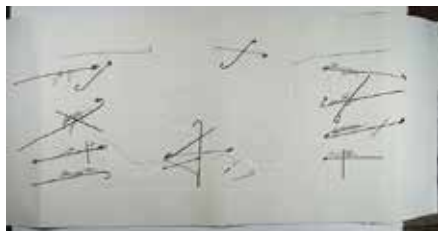
framed, image size 107 x 85 mm.

The Little Prisoner / Tan barbára la seguridad como el delito / The custody is as barbarous as the crime, printed by Delâtre in the Gazette des Beaux-Arts with text; Gazette des Beaux-Arts, lower left and Imp. Delâtre lower right.

400-500

A very good impression from the first edition of 1867, heavily inked

Delteil. 34, Harris 26.



3

Tàpies, Antoni 1923-2012 – Octavio Paz 1914-1998

portfolio comprising 8 colored etching/aquatints and carborundum, some with relief impression with poems by Octavio Paz, "Petrificada Petrificante."

3x- 520 x 830 mm. and 5x- 520 x 410 mm.

edited by: Galerie Maeght, Paris, 1978 edition 50 examples all prints signed and numbered by the artist himself.

This portfolio is no. 42 of 50. In linen-covered box 550 x 440 mm

10.000-12.000

See: TÀPIES, Escriptura material. Llibres, Tàpies Foundation, Barcelona, 2003. pp. 146/147.



3

4

Tàpies, Antoni 1923-2012 - Yves Bonnefoy 1923-

portfolio with 3 poems by Yves Binnefoy, : "La pierre trouant le sens mais, plus tard, le ciel au fond de l'entaille", comprising 2 of the 3 original colored etchings on Arches sheet 665 by 503 mm., image 394 x 324 mm., edition 44/75 edited by: Editions F.B. ( Francois Bénichou) Paris, 1981, in an edition of 75, Printers: Joan Barbarà, Barcelona for the etchings, and Jean Mathan, Boulogne for the text, signed and numbered in pencil by Tàpies, the colophon is both signed by Bonnefoy and Tàpies. In linen covered box (700 x 520 mm)

4.000-5.000

See: TÀPIES, Escriptura material. Llibres, Tàpies Foundation, Barcelona, 2003. p. 169



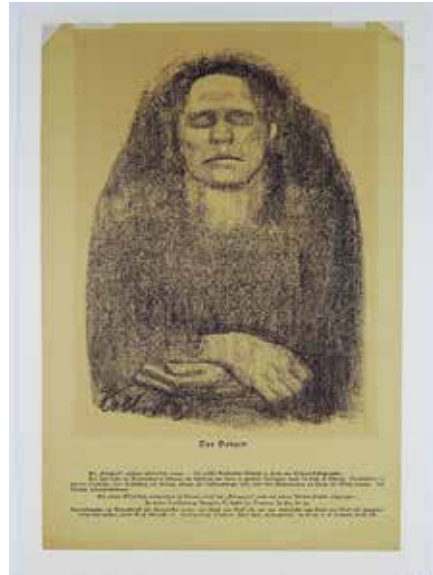
5

Kollwitz, Käthe Königsberg 1867-1915 Moritzberg  
etching and drypoint  
295 x 180 mm.

Beratung or Conspiracy from the serie "Weaversrevolt" inspired by Gerhart Hauptman (1893) Edited by: A. von der Becke, Muenchen-22., 1936 with his blind stamp.

500-600

Nice impression on wove paper. Some spurs of tape hinges.



6

Kollwitz, Käthe Königsberg 1867-1915 Moritzberg  
Transfer print lithograph on yellow paper,  
image 335 x 245 mm. sheet 470 x 320 cm.

Fear/Das Bangen or Das Warten, from the periodical „Kriegzeit“ (Künstlerflugblätter) Vol.I, no.10. 28 October, 1914.  
Verso: lithography by Max Liebermann. "Der Samataner" Published by Verlag Paul Cassirer, Berlin, signed in the stone lower left.

200-300

Tape on upper corners & margin.

4



7

Kollwitz, Käthe Königsberg 1867-1915 Moritzberg  
etching

plate size: 400 x 400 mm. sheet: 485 x 500 mm

Death, Woman and Child / Selfportrait. (Tod, Frau und Kind)

Edited by A. von der Becke Kunstverlag (1946/48) with Berlin-Halensee dry stamp.

600-800

Paper with creases and slightly trimmed margins.

Klipstein 113.



8

Kollwitz, Käthe Königsberg 1867-1915 Moritzberg  
original etching 1910 etching,

Image size: 193 x 126 mm., sheet: 450 x 310 mm. :

Mother with her child in her arms / Mutter mit Kind auf dem Arm, printed by Otto Felsing with engraved text, lower left

Org. Rad. von Käthe Kollwitz., lower right Druck v.O. Felsing, Berlin-Chlthbg.

500-600

Good impression on wove paper Some light brown spots on the verso.

Richter edition, 1921 ?, Klipstein 110.



9

Kollwitz, Käthe Königsberg 1867-1915 Moritzberg  
 etching, drypoint and sandpaper.  
 Image size: 276 x 147 mm. sheet: 360 x 233 mm.  
 Woman at the cradle / Frau an der Wiege, edition: Possibly a trial  
 proof before the edition for "Grafische Künste" (Vienna, 1903)  
 and before the engraved star on the lower plate edge.

500-600

Nice impression on wove paper.  
 Knessebeck suggests the possibility that there might be some connection to the  
 birth of Kollwitz' 2nd child in 1896, Klipstein, 38



10

Kollwitz, Käthe Königsberg 1867-1915 Moritzberg  
 etching,  
 Image size: 226 x 280 mm / sheet: 532 x 440 mm.  
 Dead woman and child / Selfportrait 1911, the unsigned edition  
 was published by A. von der Becke, Muenchen- 22. With his dry  
 stamp.

1.200-1.500

A nice impression on wove paper. After this edition the plate was destroyed!  
 Klipstein, 118



11

Kollwitz, Käthe Königsberg 1867-1915 Moritzberg  
 etching  
 Image size: 322 x 238 mm. sheet 600 x 448 mm.  
 Working woman with earring / Arbeiterfrau mit dem Ohrring,  
 1910, the unsigned edition was printed with engraved text, lower  
 left; Käthe Kollwitz Rad., lower right; Verlag E.A. Seemann, Leipzig.

1.000-1.200

Nice soft ground etching, dark impression on heavy wove paper  
 Klipstein, 105



12

Kollwitz, Käthe Königsberg 1867-1915 Moritzberg  
 lithograph on cream laid paper.  
 size 440 x 322 mm.  
 Worker woman in profile facing left / Arbeiterfrau im Profil nach  
 links. Unknown edition (c. 1920)

400-500

Margins trimmed till the image. Some spots and scratch. Verso: brown tape along  
 the four edges.  
 Klipstein, 67



13

Kollwitz, Käthe Königsberg 1867-1915 Moritzberg  
 lithograph  
 Image size: 365 x 504 mm. sheet: 462 x 634 mm  
 Pflugzieher und Weib, signed in the stone K. Kollwitz, 02,  
 published by Verlag A.v. d. Becke, Berlin. With dry stamp lower left.

I.000-I.200

Nice and rare impression on heavy cream colored wove paper, verso some  
 remains of tape.  
 Klipstein, 61



14

FLEMISH ART.

portfolio: Hedendaagse Vlaamse Kunst '73.  
 sheet. 780 x 560 mm. edition: 17/100.

Edited by: Amsterdam Art Centre B.V. introduction by Maurits  
 Naessens (Mecatorfonds), including a poem by Hugues Pernath  
 p.p. (with signature), printed by : Piet Clement Amsterdam, com-  
 prising works by Bram Bogaert, Vic Gentils, René Guiette, Octave  
 Landuyt, Pol Mara, Roger Raveel, Guy Vandenbranden, Paul van  
 Hoeydonck, Daan van Severen, Jef Verheyen and Mark Verstockt,  
 all signed and numbered by the artists. In linen covered box.

I.200-I.500



16

Domela. César 1900-1992  
 collage and silkscreen on heavy textured brown paper.  
 Constructive Composition  
 sheet 700 x 500 mm., edition 16/200  
 signed in white chalk, lower middle.

300-500

6



15

Delvaux, Paul Belgian 1897-1994  
 original lithographed dust jacket on thick paper,  
 in black on mottled rose/beige  
 322 x 605 mm.  
 special made for the book by Jacob Mira., Paul Delvaux, Graphic  
 Work (Catalogue Raisonné). Printed by Mourlot, edited by  
 A.Saurel, Paris, 1976. (Before the lettering)

250-400

reinforced on the back .



17

Domela. César 1900-1992  
collage and silkscreen on heavy textured brown paper.  
sheet 700 x 500 mm., edition 16/201  
Constructive Composition.  
signed in white chalk, lower middle.

300-500



18

Domela. César 1900-1992  
silkscreen on heavy woven grey paper.  
sheet 785 x 585 mm. edition 88/95  
Constructive Composition  
signed and 1962-91.

250-350



19

Citroen, Paul Berlin 191896-Wassenaar 1983  
collage on color lithograph  
sheet 500 x 700 mm.  
Visitez Academie Revue. 19-2-38. Excelsior, Zeestraat.  
signed Paul Citroen in pencil.

300-500



20

Meyer, Jan (Meijer) 1927-1995  
silkscreen  
sheet. 760x 550 mm on Zakarian Paris, edition H.C. X/X.  
"Printemps" with annotation; À Sadi et Giselle un souvenir ami-  
calement de Jan Meyer, Paris 24/10/74.  
signed and numbered in pencil Jan Meyer,

200-300



21

Meyer, Jan (Meijer) 1927-1995  
 silkscreen  
 sheet. 760 x 550 cm on Arches, edition 79/80  
 "Pavois" signed and numbered in pencil Jan Meyer en 1974

200-300

. some brown spots



22

Haring, Keith 1958-1990  
 silkscreen on H.T.S. paper  
 780 x 780 mm., edition unknown  
 four various pictures of "Andy Mouse".  
 edited by George Muller, 1986.  
 not signed.

100-200

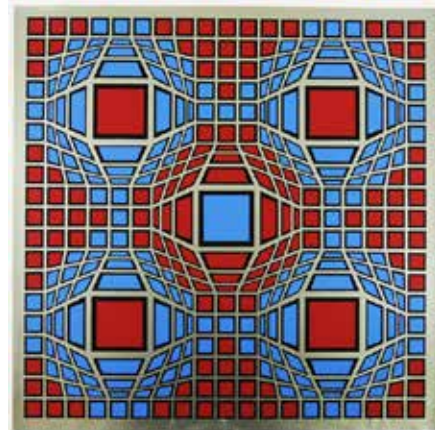
8



23

Haring, Keith 1958-1990  
 silkscreen on H.T.S. paper  
 780 x 820 mm., edition unknown.  
 Two intertwined figures,  
 edited by George Muller, 1986  
 not signed.

100-200



24

Vasarely, Victor 1908-1997  
 silkscreen An artist proof, before the edition of 190.  
 600 x 600 mm.  
 "Untitled", printed in red, blue and silver.  
 signed with annotation in pencil: Bon à tirer le 22 May 1979.

350-400

some crease and wrinkles in the right margin



25

Sompel, Willy van Belgian artist 1949- multiple silkscreen printed in blue and salmon on a paper garbage bag.

505 x 315 mm., edition 36/40.

Verse Soep.

signed and dated in pencil, 1992.

100-150

26

Scholte, Rob Amsterdam, 1958-

portfolio with embossed prints called Cliché comprising 1 title page, 1 text page and 7 prints, all in relief or embossed printing using letters and print-blocks.

Colophon with signature and H.C. (1/2) Printers proof by Edzard Diederic, Alkmaars Grafisch Atelier, 2007 The official edition is limited to 28. In cardboard portfolio.

2.000-2.500



27

Scholte, Rob Amsterdam, 1958- silkscreen

sheet 870 x 625 mm. on Rives, edition 82/100

10 years after, printed in grey dark blue.

signed and dated Rob Scholte, 1994.

100-200



28

Scholte, Rob, Amsterdam, 1958- silkscreen sheet

size 800 x 595 mm. edition 8/125

Nationale Strippenkaart,

signed and dated Rob Scholte, '90..

100-200

Remains of tape on the back



29

Middleton, Sam, New York 1927-  
lithograph  
sheet 530 x 390 mm., artists/proof  
"Blues for two"  
signed in pencil Middleton, '63

50-100  
small tear and fold



30

Middleton, Sam, New York 1927-  
lithograph  
sheet 530 x 390 mm., edition 72/100  
"Sun Dance"  
signed in pencil Middleton, '64..

50-100  
small tear and fold

10



31

Calder, Alexander Philadelphia 1898- New York 1976  
lithograph  
sheet 760 x 555 mm., edition XXI/L, on Arches..  
"Tree"  
signed and numbered in pencil Calder,

800-1000  
some light brown spotting, upper margin



32

Veldhoen, Aat, Amsterdam 1934-  
lithograph  
sheet 555 x 713 mm., edition 97/110  
"Portraits of Kabul, Aat and child in circles"  
signed, dated and numbered in pencil Veldhoen, IV '70.

200-300  
upper margin with spurs of tape





33

Christo, Vladimirov Javacheff, Bulgarie, Gabrovo, 1935-  
offset photograph  
870 x 670 mm.

The Pont Neuf Wrapped, Paris 1975-85, photo Wolfgang Volz.  
Christo, CVJ Corporation. Edit. Nouvelles Images, 1985.  
signed by Christo in black ink marker, lower left.

300-400



34

Christo, Vladimirov Javacheff, Bulgarie, Gabrovo, 1935-  
offset photograph  
size. 990 x 635 mm.

Surrounded Islands, Biscayne Bay, Greater Miami, Florida, 1980-83,  
photo; Jeanne-Claude. Christo, CVJ Corporation, 1983.  
signed by Christo in black ink marker, upper right.

400-500



35

Christo, Vladimirov Javacheff, Bulgarie, Gabrovo, 1935-  
offset photograph  
size. 635 x 985 mm.

Running Fence, Sonoma and Marin Counties, California 1972-76,  
photo; Jeanne-Claude. Christo, CVJ Corporation. 1976.  
signed by Christo in black ink marker, lower left

300-400

fold upper left



36

Christo, Vladimirov Javacheff, Bulgarie, Gabrovo, 1935-  
offset photograph  
size. 840 x 590 mm.

The Pont Neuf Wrapped, Paris. 1975-85. Photo ;Wolfgang Volz.  
Christo. Poster for Kunstmuseum Bonn., 1993/94.  
signed by Christo in yellow chalk, lower middle.

200-300



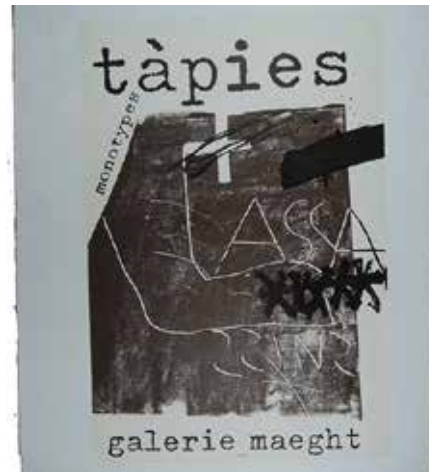
37

Tàpies, Antoni  
original poster.  
650 x 500 mm.

Edited by Galerie Maeght, 13 rue de Téhéran. Paris 8. (November, 1967) Printer: Arte.A.Maeght, Paris

150—200

See: Els Cartells de Tàpies Foundation Tàpies No.8.



38

Tàpies, Antoni  
original poster.

740 x 500 mm., edition /1.000

Monotypes, edited by Galerie Maeght, Paris. (June, 1974)  
Printer: Arte.A.Maeght, Paris.

150-200

See: Els Cartells de Tàpies Foundation Tàpies No.37.

12



39

Tàpies, Antoni  
Galerie Ueda, Tokyo.  
original poster.

760 x 560 mm., edition /3.000

Edited by Galerie Ueda, Tokyo. (April, 1981) Printer: Tallers de Polígrafa Obra Gràfica, Barcelona.

150-200

See: Els Cartells de Tàpies Foundation Tàpies No.99



40

Tàpies., Antoni  
original poster.  
700 x 500 mm.

Peintures, encres et vernis 1982-1983à l'Abbaye de Sénanque, Gordes. Edited by Renault. Recherches Art et Industrie, Paris. (August, 1983) Printer: Atelier Lelong, Paris.

150-200

See: Els Cartells de Tàpies Foundation Tàpies No.129.

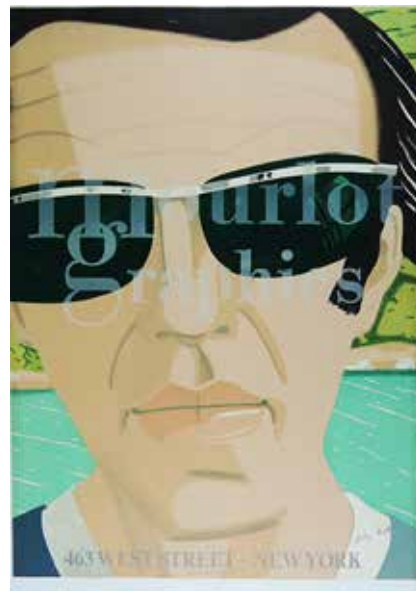


41

Tàpies, Antoni  
original poster.  
730 x 500 mm., edition /2.000.  
FIAC 83. Galerie Maeght - Lelong. Edited by Galerie Lelong, Paris.  
(September, 1983) Printer: Atelier Lelong, Paris.

150-200

See: Els Cartells de Tàpies Foundation Tàpies No.134.



42

Katz, Alex 1927 New York  
lithographed poster  
755 x 540 mm. on Arches with watermark Mourlot.  
Self-Portrait, in the sun-glasses inscribed Mourlot Graphics.  
Inscribed lower center 463 West Street-New York. and Mourlot  
Graphics-1970 Kennedy Graphics.  
signed Alex Katz in pencil.

100-150

See: Catalogue Raisonné Maravall. no. 33.

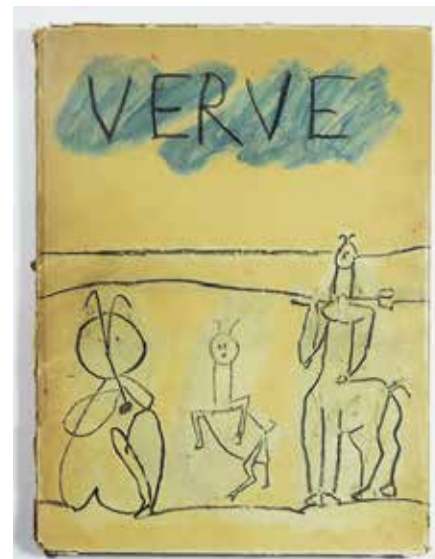


43

Chagall, Marc 1887-1985  
book  
360 x 268 mm., issued in 6500 copies.  
Marc Chagall. Dessins pour la Bible. Paris: Revue Verve. Vol.X.  
no`s 37/38., 1960. Éditions Tériade with introduction by Gaston  
Bachelard. With 96 reproductions in black and white, and 25  
colored ( inclusive the boards) & 23 black-white original litho-  
graphs, printed by Mourlot.

3.000-3.500

Mourlot 230-277

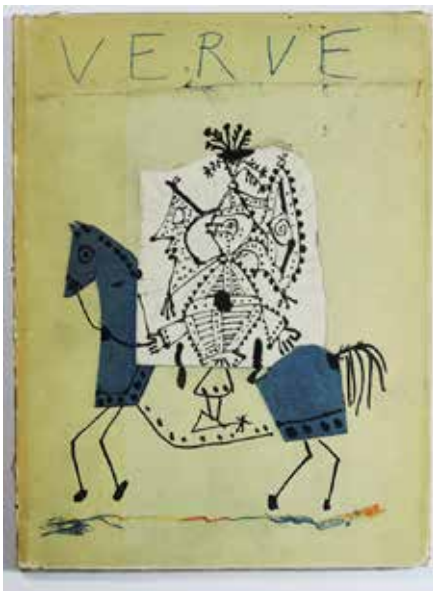


44

VERVE.  
book  
354 x 285 mm.  
Vol.V.Nos 19-20. Revue Artistique et Littéraire. Tériade, 1948.  
Couleur de Picasso. Peintures et dessins de Picasso. Textes de  
Picasso et de Sabartès. Printed ; Draeger, Paris (1948) with 18  
mounted color plates and 78 black and white images, paper cov-  
ered lithographed boards

200-300

poor condition



45

VERVE.

book

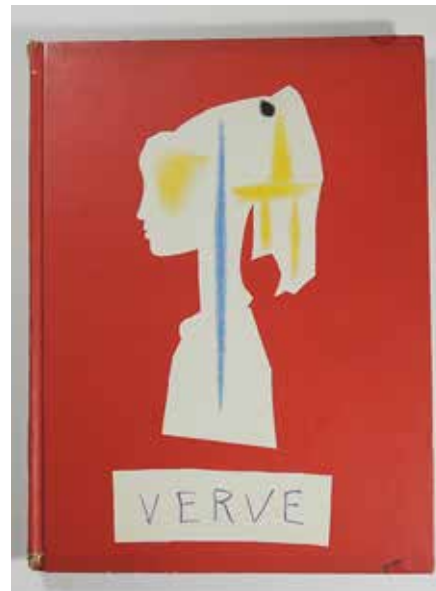
355 x 285 mm.

Vol.VII.Nos 25-26. Revue Artistique et Littéraire.Tériade, 1951. Picasso à Vallauris 1947-1951. Printed ; Draeger, Paris (1951), illustrated with color plates and black and white images.

Paper covered lithographed boards

300-400

reasonable condition, spine defective



46

VERVE.

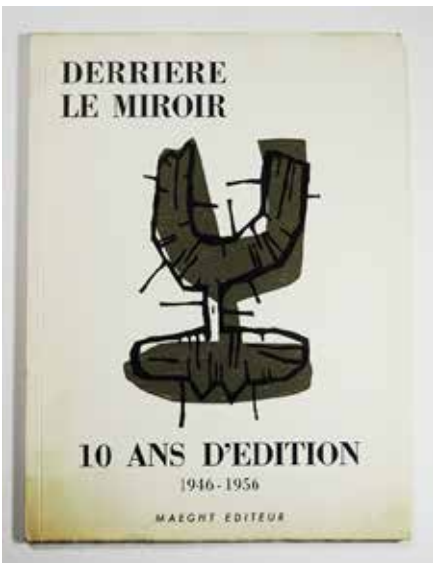
book

356 x 285 mm.

Vol.VIII..Nos 29-30. Revue Artistique et Littéraire.Tériade, 1954. Vallauris-Mil Neuf Cent Cinquante Quatre. Suite de 180 dessins de Picasso, 28 novembre 1953 au 3 février 1954.. Printed ; Draeger, Paris (1954) Illustrated with 167 (3 col.) plates and 16 color lithographs after Picasso by Mourlot, lithographed boards in red and blue.

1.000-1.200

14



47

DERRIÈRE le MIROIR. 10 Ans d'edition 1946-1956..

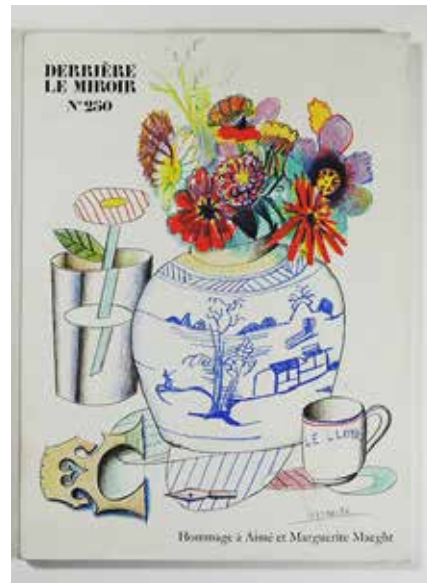
book

380 x 280 mm.

Published by Maeght Editeur, Paris, 1956. Exhibition catalogue, 75 pages, illustrated throughout inclusive 2 original two-page fold out color lithographs by Chagall and Miró, 1 lithograph by Bazaine and 2 etchings by Miró and Giacometti, in wrappers which is a original duo-tone woodcut by Raoul Ubac..

800-1000

excellent copy



48

DERRIÈRE le MIROIR.

book

381 x 280 mm.

No. 250. Hommage à Aimé et Marguerite Maeght. Published by Galerie Maeght, Paris, 1982(first edition) 113 pages. Illustrated throughout with 21 original lithographs, inclusive 18 in color and 10 double paged. Including: Chagall, Miro,Alechinsky, Riopolle, Kelly,Tapies, Chillida Arakawa et al, in stiff wrappers which is a original lithograph by Saul Steinberg.

500-600

excellent copy



## 48a

Brussel, Anneke van, 1949-  
oil and aquarel, maroufle  
64 x 48 cm.  
Red dress 1988  
signed  
executed 1988

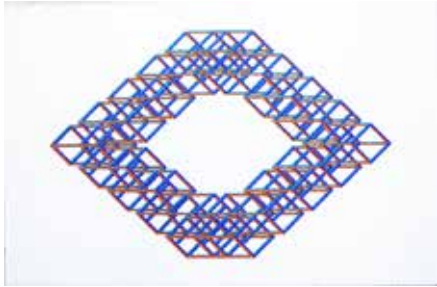
2.000-2.500  
good condition



## 48b

Bol, Henri 1945-  
oil on panel  
50 x 40 cm.  
Still life with enamel and bottles  
signed  
executed 1987

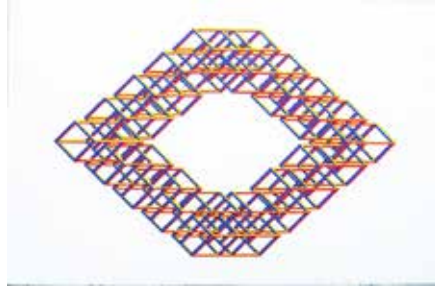
2.000-2.500  
good condition



49

Baljeu, Joost 1925-1991  
screenprint edition 22/50  
65 x 100 cm.  
Structure 1986  
signed

450-600  
excellent



50

Baljeu, Joost 1925-1991  
screenprint edition 22/50  
65 x 100 cm.  
Structure 1986  
signed

450-600  
excellent

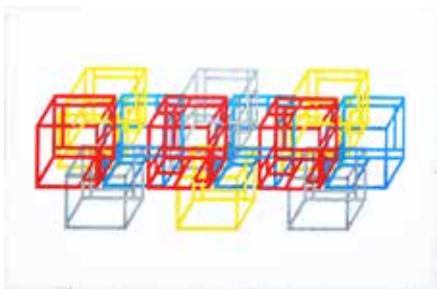


51

Baljeu, Joost 1925-1991  
screenprint edition 25/75  
65 x 100 cm.  
Inner Dimensions 1977  
signed

650-800  
excellent

16



52

Baljeu, Joost 1925-1991  
screenprint edition 25/75  
65 x 100 cm.  
Inner Dimensions 1977  
signed

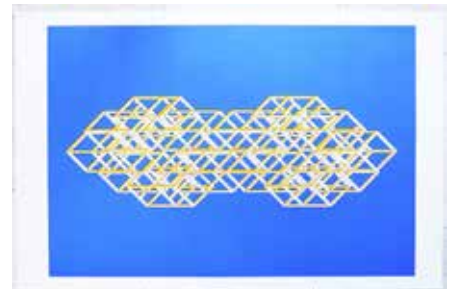
650-800  
excellent



53

Baljeu, Joost 1925-1991  
screenprint edition 25/75  
65 x 100 cm.  
Inner Dimensions 1977  
signed

650-800  
excellent



54

Baljeu, Joost 1925-1991  
screenprint edition 25/75  
65 x 100 cm.  
Inner Dimensions 1977  
signed

650-800  
excellent



55

Baljeu, Joost 1925-1991  
screenprint edition 5/20  
50 x 150 cm.  
W5 1958  
signed

450-600  
excellent



56

Baljeu, Joost 1925-1991  
serigrafy edition 7/13  
40 x 40 cm.  
Wandverwandlungen W8  
signed

450-600  
excellent



57

Baljeu, Joost 1925-1991  
serigrafy edition 1/6  
40 x 40 cm.  
Wandverwandlungen W14  
signed

450-600  
excellent

17



58

Baljeu, Joost 1925-1991  
3 screenprints edition 5/50  
65 x 65 cm. each  
Focus I, II, III 1975  
signed

1200-1500  
excellent



59

Gruppe Bewegung Moskou 1962-1972  
screenprint edititon 26/150  
65 x 65 cm.  
Untitled

400-600  
excellent



60

Gruppe Bewegung Moskou 1962-1972  
screenprint edititon 26/150  
65 x 65 cm.  
Untitled

400-600  
excellent



61

Gruppe Bewegung Moskou 1962-1972  
screenprint edition 26/150  
65 x 65 cm.  
Untitled

400-600  
excellent



62

Gruppe Bewegung Moskou 1962-1972  
screenprint edition 26/150  
65 x 65 cm.  
Untitled

400-600  
excellent

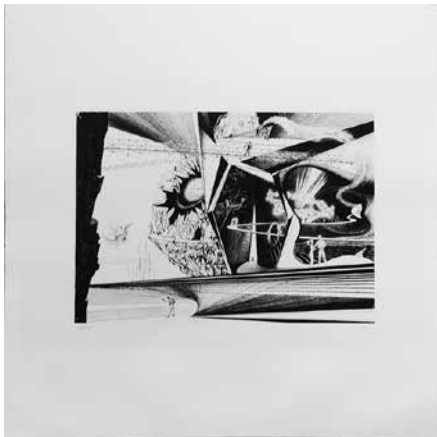


63

Gruppe Bewegung Moskou 1962-1972  
screenprint edition 26/150  
65 x 65 cm.  
Untitled

400-600  
excellent

18



64

Gruppe Bewegung Moskou 1962-1972  
screenprint edition 26/150  
65 x 65 cm.  
Untitled

400-600  
excellent



65

Baljeu, Joost 1925-1991  
4 serigrafies and 1 object in box edition /100  
40 x 70 cm.  
Lichtraum edition Hoffmann  
signed

5000-6000  
excellent

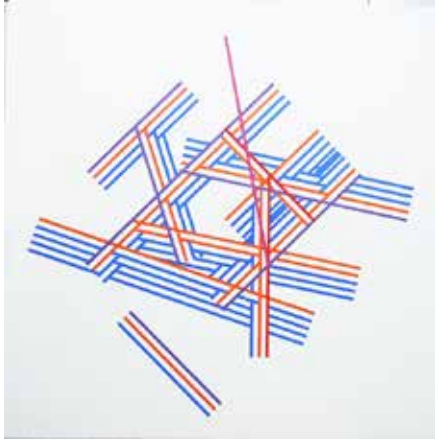


66

Baljeu, Joost 1925-1991  
object  
40 x 70 cm.  
framed object from the Lichtraum edition Hoffmann  
signed

5000-6000  
excellent





67

Martin, Kenneth 1905-1984  
screenprint  
68,5 x 68,5 cm.  
Untitled,  
signed

650-800  
small tear in left margin



68

Vossen, Andre van der 1893-1948  
gouache  
50 x 34,9 cm.  
Untitled,  
signed, executed ca 1953

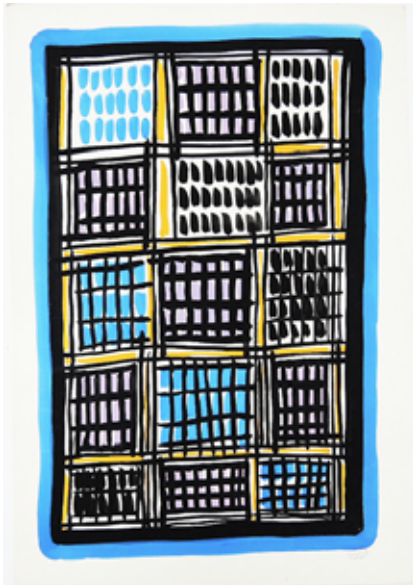
120-180



69

Vossen, Andre van der 1893-1949  
gouache  
50 x 34,9 cm.  
Untitled,  
signed, executed ca 1953

120-180



70

Vossen, Andre van der 1893-1950  
gouache  
50 x 34,9 cm.  
Untitled,  
signed, executed ca 1953

120-180



71

Vossen, Andre van der 1893-1951  
gouache  
50 x 34,9 cm.  
Untitled,  
signed, executed ca 1953

120-180



72

Vossen, Andre van der 1893-1952  
gouache  
29,6 x 45,9 cm.  
Untitled,  
signed, executed ca 1953

120-180



73

Vossen, Andre van der 1893-1953  
gouache  
24 x 48,5 cm.  
Untitled,  
signed, executed ca 1953

120-180



74

Vossen, Andre van der 1893-1954  
gouache  
43,2 x 24,2 cm.  
Untitled,  
signed, executed ca 1953

120-180



75

Vossen, Andre van der 1893-1955  
gouache  
32,5 x 40,8 cm.  
Untitled,  
signed, executed ca 1953

120-180

20



76

Vossen, Andre van der 1893-1956  
gouache  
23,5 x 22,8 cm.  
Untitled,  
signed, executed ca 1953

120-180



77

Vossen, Andre van der 1893-1957  
gouache  
33 x 24,6 cm.  
Untitled,  
signed, executed ca 1953

120-180



78

Vossen, Andre van der 1893-1958  
gouache  
46,4 x 29,5 cm.  
Untitled,  
signed, executed ca 1953

120-180



79

Vossen, Andre van der 1893-1959  
gouache  
48,5 x 31,5 cm.  
Untitled,  
signed, executed ca 1953

120-180



80

Vossen, Andre van der 1893-1960  
gouache  
65 x 49,5 cm.  
Untitled,  
signed, executed ca 1953

120-180



81

Vossen, Andre van der 1893-1961  
gouache  
49,5 x 69,5 cm.  
Untitled,  
signed, executed ca 1953

120-180



82

Vossen, Andre van der 1893-1962  
gouache  
46 x 66 cm.  
Untitled,  
signed, executed ca 1953

120-180



83

Vossen, Andre van der 1893-1963  
collage  
25 x 10,5 cm.  
Untitled,  
signed and with initials

120-180



84

Vossen, Andre van der 1893-1964  
collage  
19 x 32,5 cm.  
Paysage Nocturne,  
signed

120-180



85

Vossen, Andre van der 1893-1965  
gouache  
25,5 x 32,4 cm.  
Untitled, signed with the initials

120-180



86

Landheer, Hugo 1896-1995  
oil on canvas  
17,5 x 20,5 cm.  
Houses in a hilly landscape  
nr 66 jan/feb '90

20-50

87

NO LOT

22



88

Landheer, Hugo 1896-1995  
oil on board  
15 x 21 cm.  
Dogs  
nr 206

20-50



89

Landheer, Hugo 1896-1995  
oil on canvas  
15 x 18 cm.  
Drawbridges, a church and a windmill  
nr 189 feb/mrt '92

20-50



90

Landheer, Hugo 1896-1995  
oil on canvas  
15,5 x 18,5 cm.  
Townview with church  
nr 72 feb/mrt '90

20-50

91

NO LOT



92

Landheer, Hugo 1896-1995  
oil on canvas  
19 x 21 cm.  
Farmhouses and a cart  
nr 194 aug/okt '89

20-50



93

Landheer, Hugo 1896-1995  
oil on canvas  
16 x 19,5 cm.  
Foal  
nr 204

20-50

23



94

Landheer, Hugo 1896-1995  
oil on canvas  
16 x 21,3 cm.  
Horses  
nr 205 1956

20-50



95

Landheer, Hugo 1896-1995  
oil on canvas  
15,5 x 20,5 cm.  
Train and farmhouse  
nr 94 dec '91 jan '92

20-50



96

Landheer, Hugo 1896-1995  
oil on canvas  
15 x 16,5 cm.  
Willows  
nr 83 okt/dec '90

20-50



97

Landheer, Hugo 1896-1995  
oil on canvas  
67 x 56 cm.  
Rearing foal  
nr 36 aug '84 sep '87

100-200



98

Landheer, Hugo 1896-1995  
oil on canvas  
62 x 48 cm.  
Threemaster and white towers  
nr 29 sep '78 jun '84

150-200



99

Landheer, Hugo 1896-1995  
oil on canvas  
64 x 58 cm.  
Fishing vessels on a beach near a red town  
nr 31 dec '85 jan '88

150-200

24



100

Landheer, Hugo 1896-1995  
oil on canvas  
50 x 60 cm  
White houses in a hilly landscape  
nr 23 okt '87 mrt '88

150-200



101

Landheer, Hugo 1896-1995  
oil on board  
16 x 21 cm.  
Horse  
nr 203 1943

20-50



102

Landheer, Hugo 1896-1995  
oil on canvas  
18 x 16 cm.  
Canalview with white drawbridges  
nr 134 circa 1982

20-50



103

Landheer, Hugo 1896-1995  
2 drawings

Townviews

20-50



104

Hutson, Bill 1936-  
oil on hexagonal canvas  
58 x 55 cm.  
Untitled 1970's

300-400



105

Hutson, Bill 1936-  
sepia drawing  
13,5 x 20 cm.  
The first tragedy  
signed august 1966

200-300



106

Hutson, Bill 1936-  
sepia drawing  
13 x 15 cm.  
The second tragedy  
signed august 1966

200-300



107

Bierenbroodspot, Gertie  
mixed media  
62 x 30,5 cm.  
Untitled  
signed and 1970

300-400



108

Heijboer, Anton  
etching  
47,4 x 99,6 cm  
Impotence  
signed and 1962

800-900



109

Meijer, Jan 1927-1995  
gouache  
48 x 63 cm.  
Shipping

250-300



110

Meijer, Jan 1927-1995  
gouache  
63 x 48 cm.  
Harbour

250-300



111

Santen, Joost van  
oil on canvas  
70 x 99,5 cm.  
Amstelveld Amsterdam  
signed

400-600

26



112

Brands, Eugene 1913-2002  
gouache  
47 x 57 cm.  
Zwart dominant  
signed nr 7137 9-11-1983

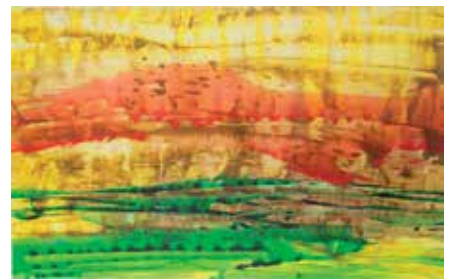
1800-2000



113

Brands, Eugene 1913-2002  
gouache  
25 x 22,5 cm.  
Painting  
signed nr 6627 17-2-'81

1200-1500



114

Oldenhoff, Erik  
watercolour  
50 x 80 cm.  
Landscape T94  
signed and 2000

100-200





115

Oldenhoff, Erik  
oil on canvas  
50 x 60 cm.  
V2 French landscape  
signed on the reverse 2002

200-300



116

NN  
Chinese book print  
21 x 30,5 cm.  
Man and horse,  
19th Century

30-50



117

Slonem, Hunt  
watercolour  
56,5 x 75,5 cm.  
Untitled

250-400



118

Ficher, Julien 1888-1989  
ink drawing  
37,8 x 29 cm.  
Untitled  
signed

100-120



119

Vijlbrief, Ernst  
gouache  
42 x 61 cm.  
Untitled  
signed 1960

250-300



120

Dost, Bart  
gouache  
56,5 x 56,5 cm.  
Untitled  
signed 5-02-99

200-300



121

Peter Engels  
gouache and collage  
49,5 x 64,8 cm.  
Untitled  
signed 86 '89

100-200



122

Donker, Gijs  
oil on canvas  
65 x 80 cm.  
Beach view  
signed lr and '91

150-200



123

Donker, Juust  
oil on canvas  
50 x 75 cm.  
Beach pavillon  
signed lr and '91

150-200

28



124

Bertholet, Ferry  
watercolour  
15 x 25,5 cm.  
Untitled  
signed '81

80-100



125

Niermeijer, Theo 1940-2005  
oil on canvas  
40 x 30 cm.  
My studio  
signed 17 juli '88

100-200



126

Klashorst, Peter  
oil on canvas  
80 x 60 cm.  
Untitled  
signed on the reverse and '86

120-150